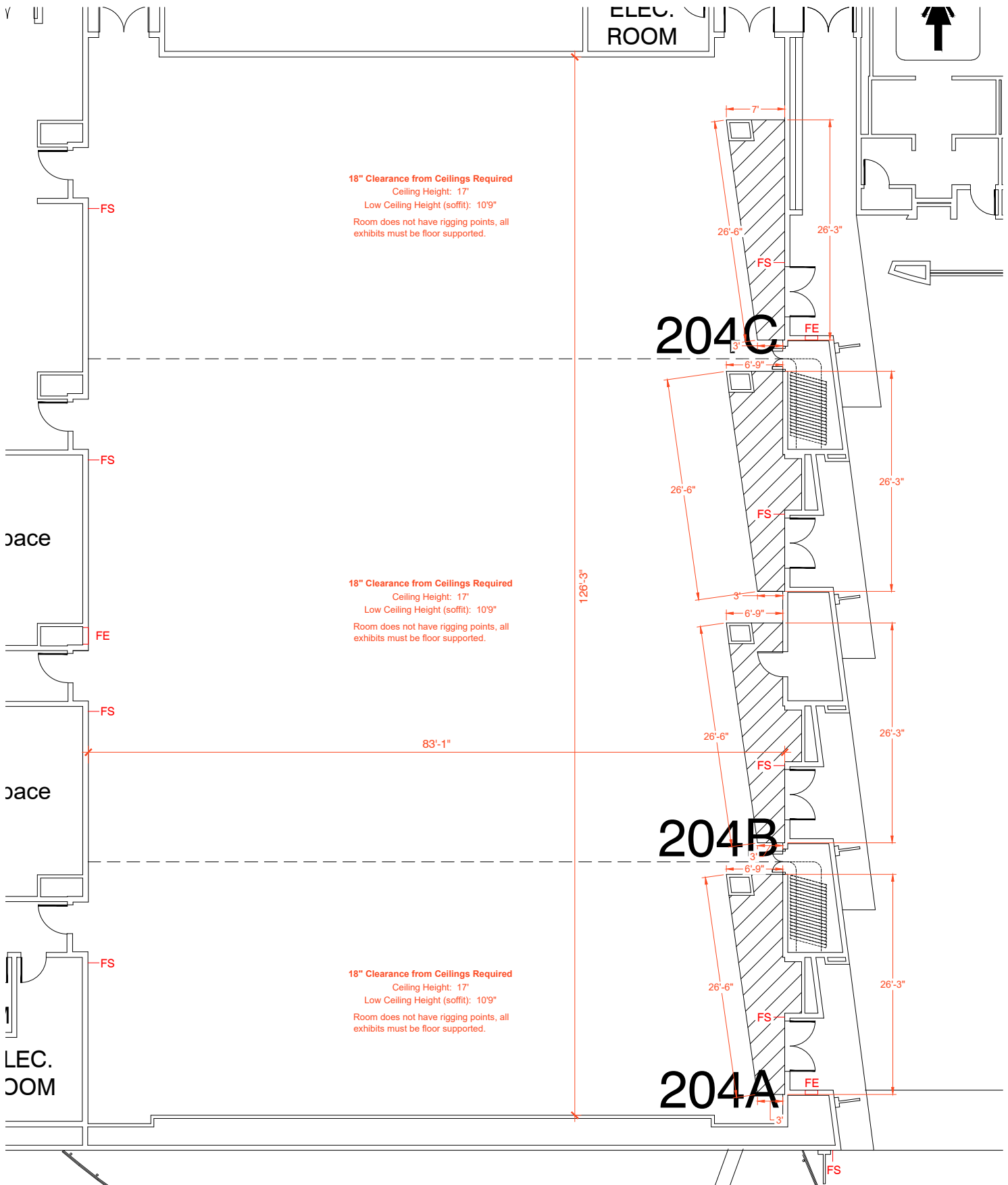








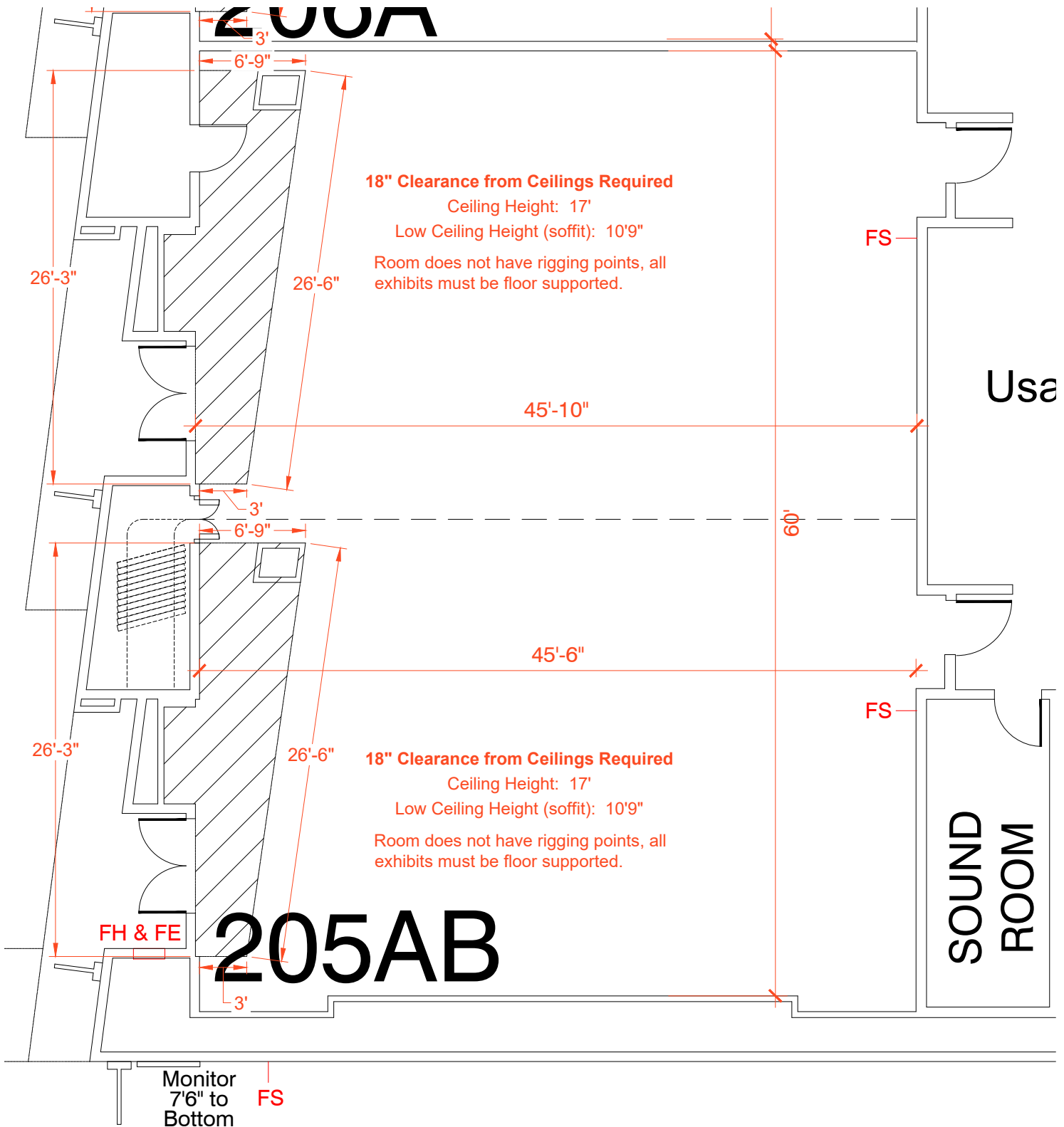
# MEETING ROOM 204



Disclaimer: Every effort has been made to ensure the accuracy of all information contained on this floor plan. However, no warranties, either expressed or implied, are made with respect to this floor plan. If the location of building columns, utilities or architectural components of the facility is a consideration in the construction or usage of an exhibit, it is the sole responsibility of the exhibitor to physically inspect the facility to verify all dimensions and locations.

FS = Fire Strobes are located at 66" from the floor unless noted otherwise (4'x8") - DO NOT BLOCK  
 ES = Exit Signs are located at 97" from the floor unless noted otherwise - DO NOT BLOCK  
 FE = Fire Extinguisher Cabinet - DO NOT BLOCK  
 FH = Fire Hose Cabinet - DO NOT BLOCK

# MEETING ROOM 205

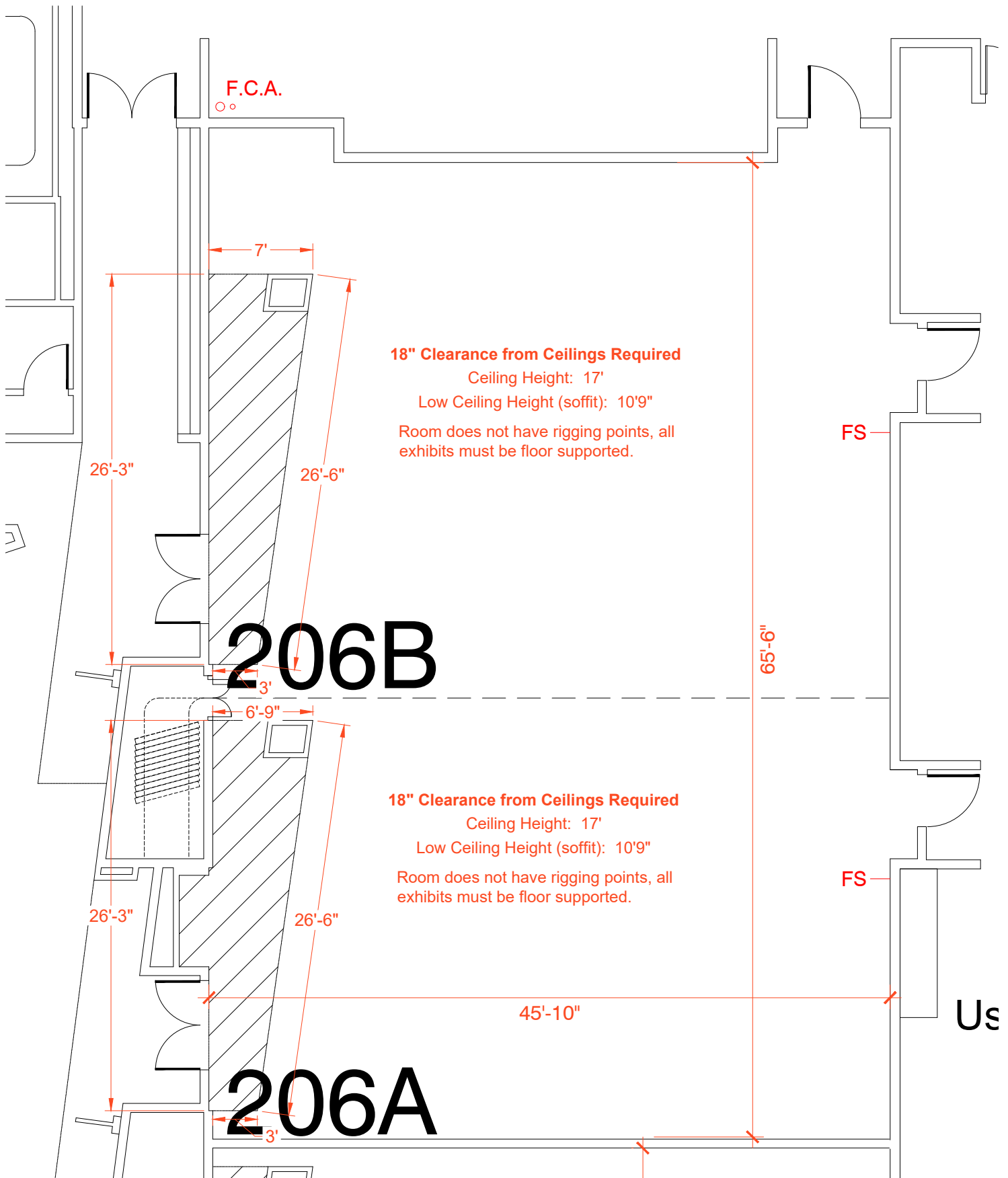


## 205

Disclaimer: Every effort has been made to ensure the accuracy of all information contained on this floor plan. However, no warranties, either expressed or implied, are made with respect to this floor plan. If the location of building columns, utilities or architectural components of the facility is a consideration in the construction or usage of an exhibit, it is the sole responsibility of the exhibitor to physically inspect the facility to verify all dimensions and locations.

FS = Fire Strobes are located at 66" from the floor unless noted otherwise (4'x8') - DO NOT BLOCK  
 ES = Exit Signs are located at 97" from the floor unless noted otherwise - DO NOT BLOCK  
 FE = Fire Extinguisher Cabinet - DO NOT BLOCK  
 FH = Fire Hose Cabinet - DO NOT BLOCK

# MEETING ROOM 206

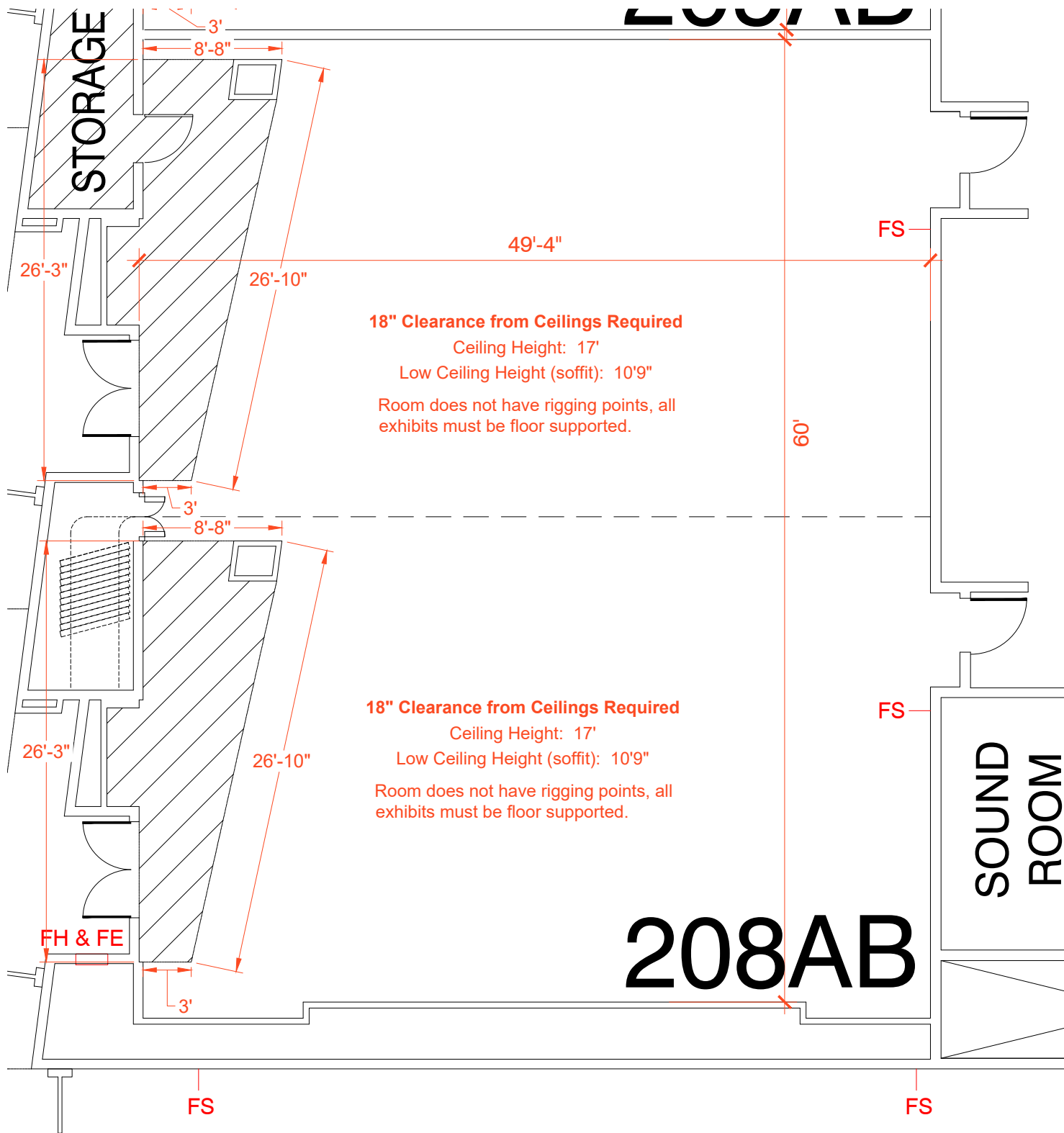


Disclaimer: Every effort has been made to ensure the accuracy of all information contained on this floor plan. However, no warranties, either expressed or implied, are made with respect to this floor plan. If the location of building columns, utilities or architectural components of the facility is a consideration in the construction or usage of an exhibit, it is the sole responsibility of the exhibitor to physically inspect the facility to verify all dimensions and locations.

FS = Fire Strobes are located at 66" from the floor unless noted otherwise (4'x8") - DO NOT BLOCK  
 ES = Exit Signs are located at 97" from the floor unless noted otherwise - DO NOT BLOCK  
 FE = Fire Extinguisher Cabinet - DO NOT BLOCK  
 FH = Fire Hose Cabinet - DO NOT BLOCK



# MEETING ROOM 208

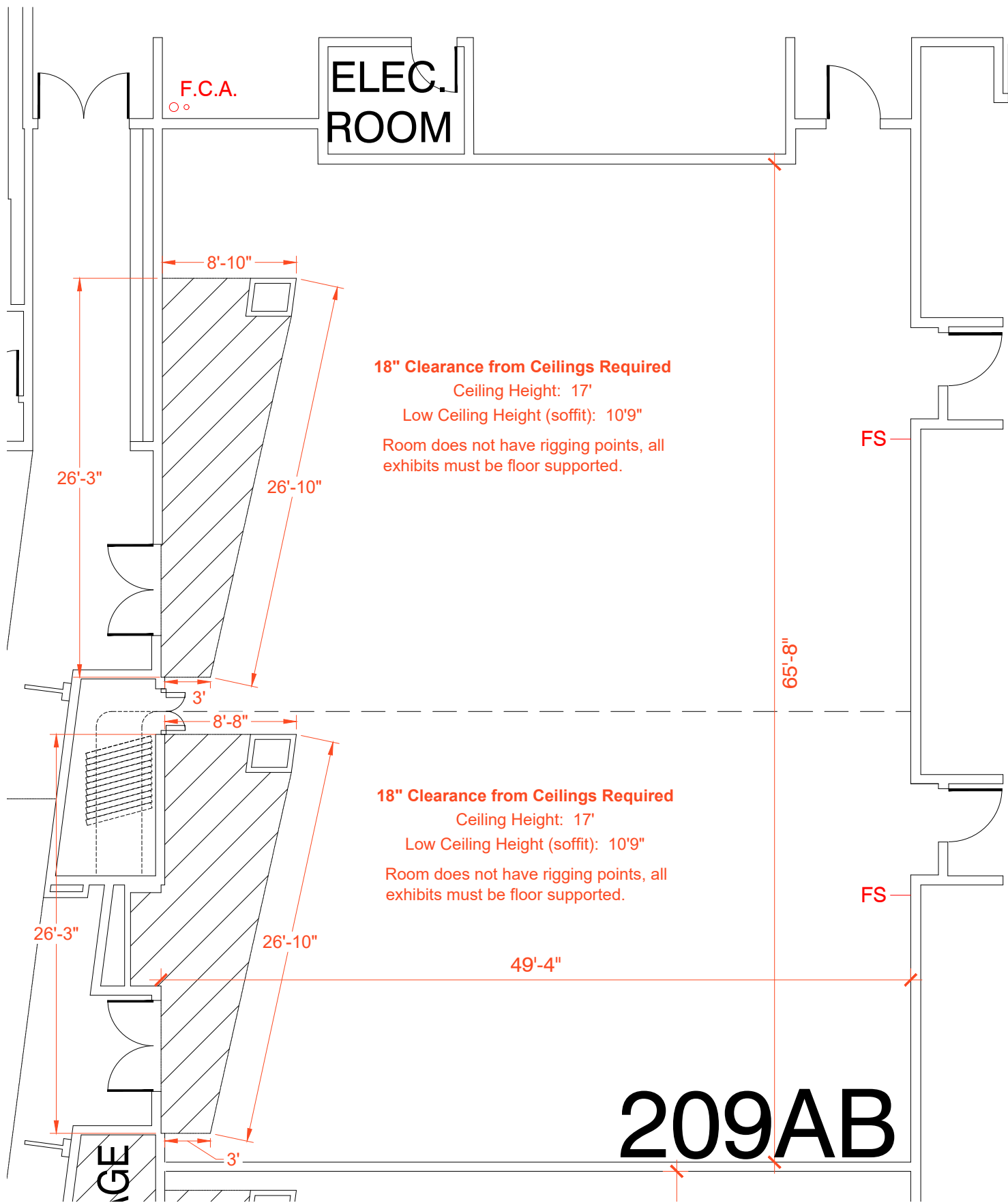


Disclaimer: Every effort has been made to ensure the accuracy of all information contained on this floor plan. However, no warranties, either expressed or implied, are made with respect to this floor plan. If the location of building columns, utilities or architectural components of the facility is a consideration in the construction or usage of an exhibit, it is the sole responsibility of the exhibitor to physically inspect the facility to verify all dimensions and locations.

FS = Fire Strobes are located at 66" from the floor unless noted otherwise (4'x8') - DO NOT BLOCK  
 ES = Exit Signs are located at 97" from the floor unless noted otherwise - DO NOT BLOCK  
 FE = Fire Extinguisher Cabinet - DO NOT BLOCK  
 FH = Fire Hose Cabinet - DO NOT BLOCK



# MEETING ROOM 209



**18" Clearance from Ceilings Required**  
 Ceiling Height: 17'  
 Low Ceiling Height (soffit): 10'9"  
 Room does not have rigging points, all exhibits must be floor supported.

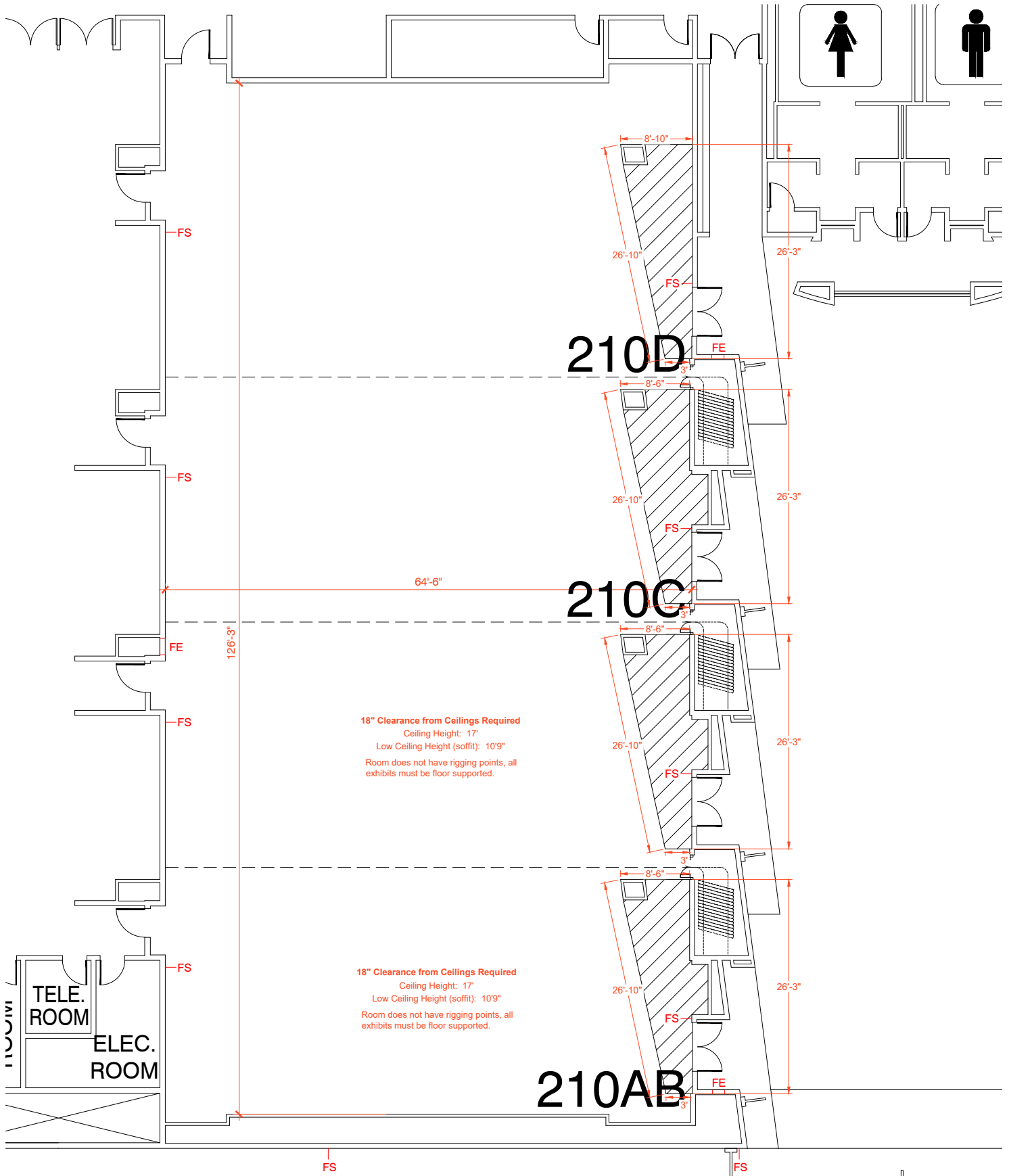
**18" Clearance from Ceilings Required**  
 Ceiling Height: 17'  
 Low Ceiling Height (soffit): 10'9"  
 Room does not have rigging points, all exhibits must be floor supported.

## 209AB

Disclaimer: Every effort has been made to ensure the accuracy of all information contained on this floor plan. However, no warranties, either expressed or implied, are made with respect to this floor plan. If the location of building columns, utilities or architectural components of the facility is a consideration in the construction or usage of an exhibit, it is the sole responsibility of the exhibitor to physically inspect the facility to verify all dimensions and locations.

FS = Fire Strobes are located at 66" from the floor unless noted otherwise (4'x8') - DO NOT BLOCK  
 ES = Exit Signs are located at 97" from the floor unless noted otherwise - DO NOT BLOCK  
 FE = Fire Extinguisher Cabinet - DO NOT BLOCK  
 FH = Fire Hose Cabinet - DO NOT BLOCK

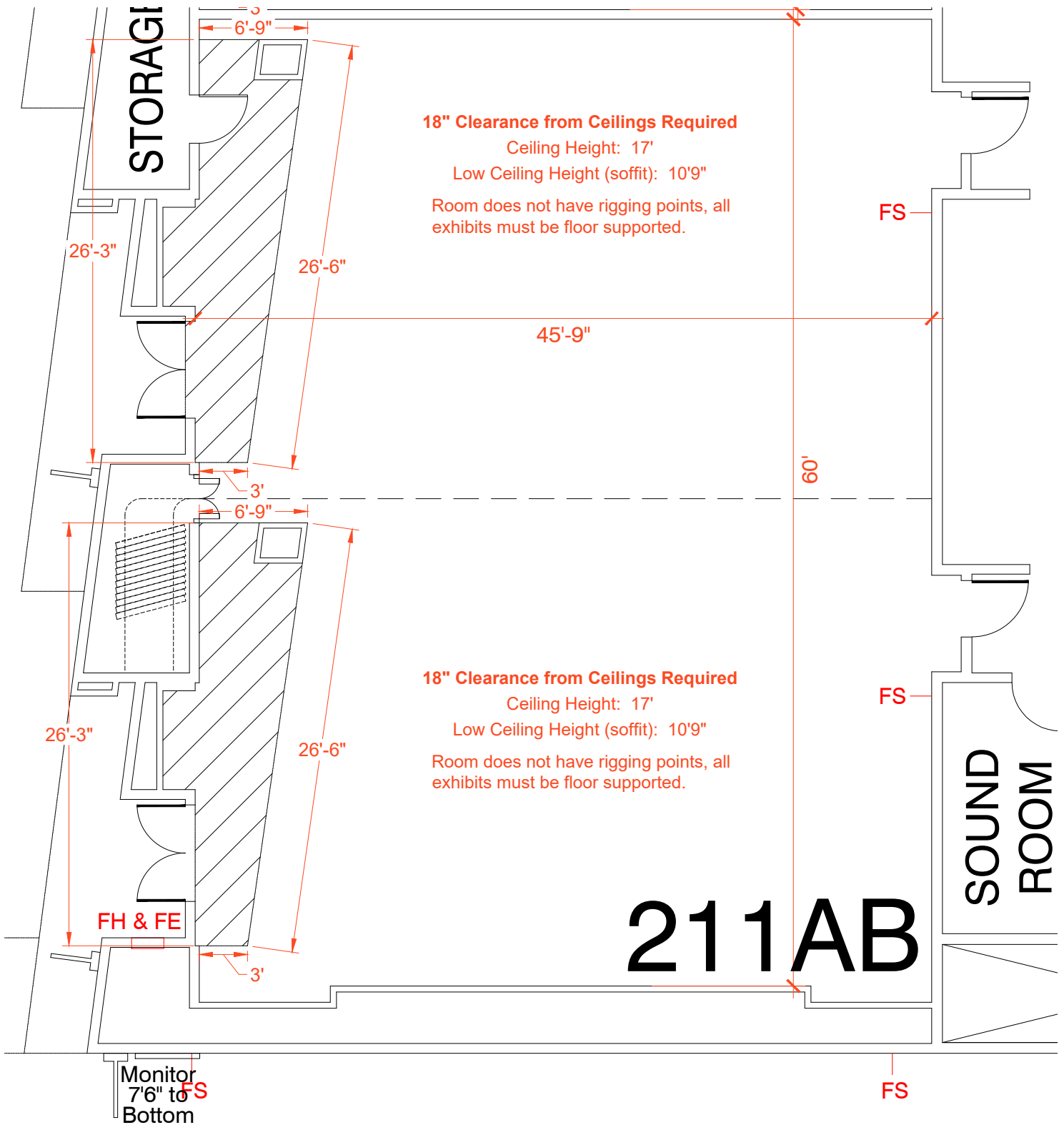
# MEETING ROOM 210



Disclaimer: Every effort has been made to ensure the accuracy of all information contained on this floor plan. However, no warranties, either expressed or implied, are made with respect to this floor plan. If the location of building columns, utilities or architectural components of the facility is a consideration in the construction or usage of an exhibit, it is the sole responsibility of the exhibitor to physically inspect the facility to verify all dimensions and locations.

FS = Fire Strobes are located at 66" from the floor unless noted otherwise (4"x8") - DO NOT BLOCK  
 ES = Exit Signs are located at 97" from the floor unless noted otherwise - DO NOT BLOCK  
 FE = Fire Extinguisher Cabinet - DO NOT BLOCK  
 FH = Fire Hose Cabinet - DO NOT BLOCK

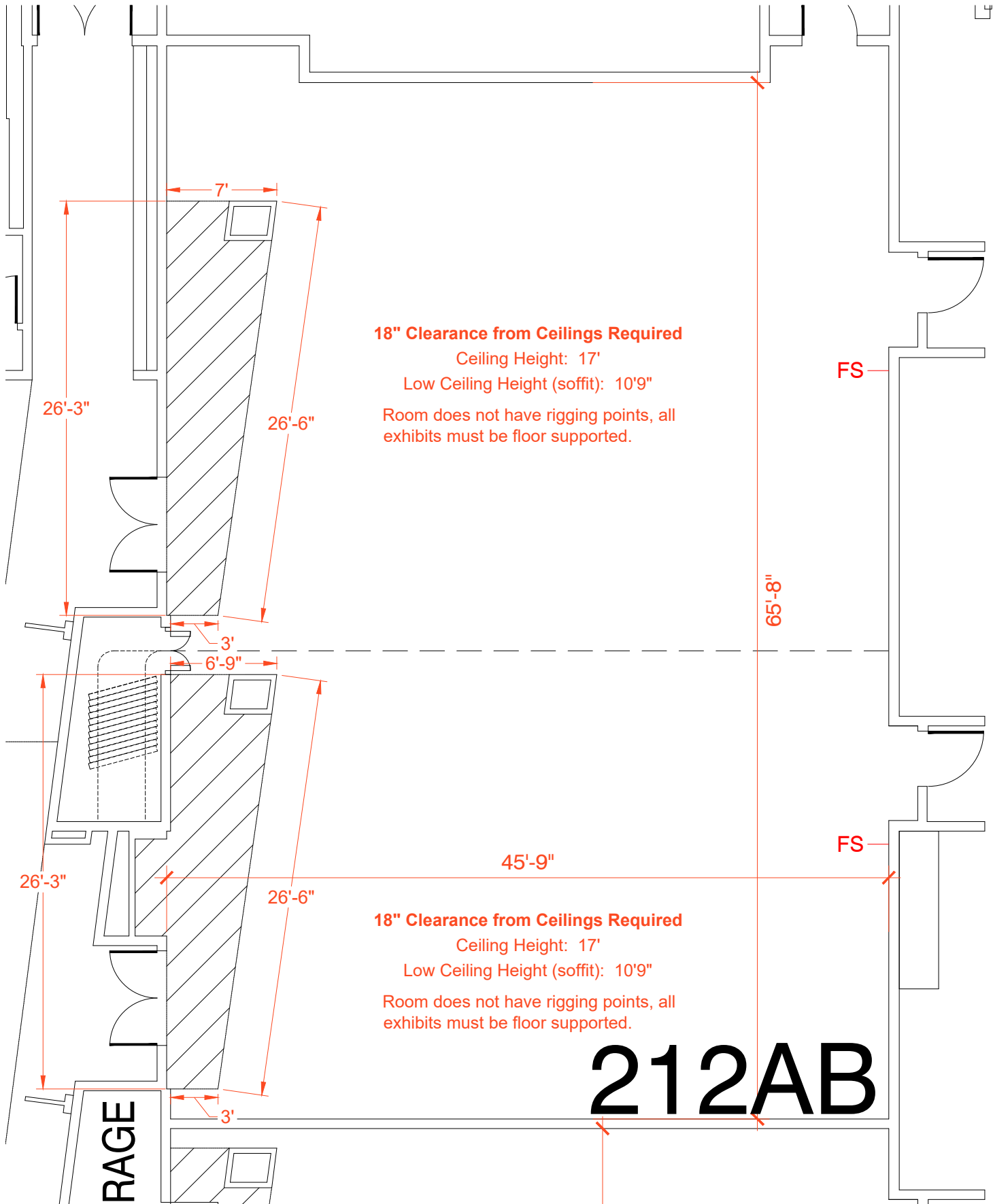
# MEETING ROOM 211



Disclaimer: Every effort has been made to ensure the accuracy of all information contained on this floor plan. However, no warranties, either expressed or implied, are made with respect to this floor plan. If the location of building columns, utilities or architectural components of the facility is a consideration in the construction or usage of an exhibit, it is the sole responsibility of the exhibitor to physically inspect the facility to verify all dimensions and locations.

FS = Fire Strobes are located at 66" from the floor unless noted otherwise (4'x8") - DO NOT BLOCK  
 ES = Exit Signs are located at 97" from the floor unless noted otherwise - DO NOT BLOCK  
 FE = Fire Extinguisher Cabinet - DO NOT BLOCK  
 FH = Fire Hose Cabinet - DO NOT BLOCK

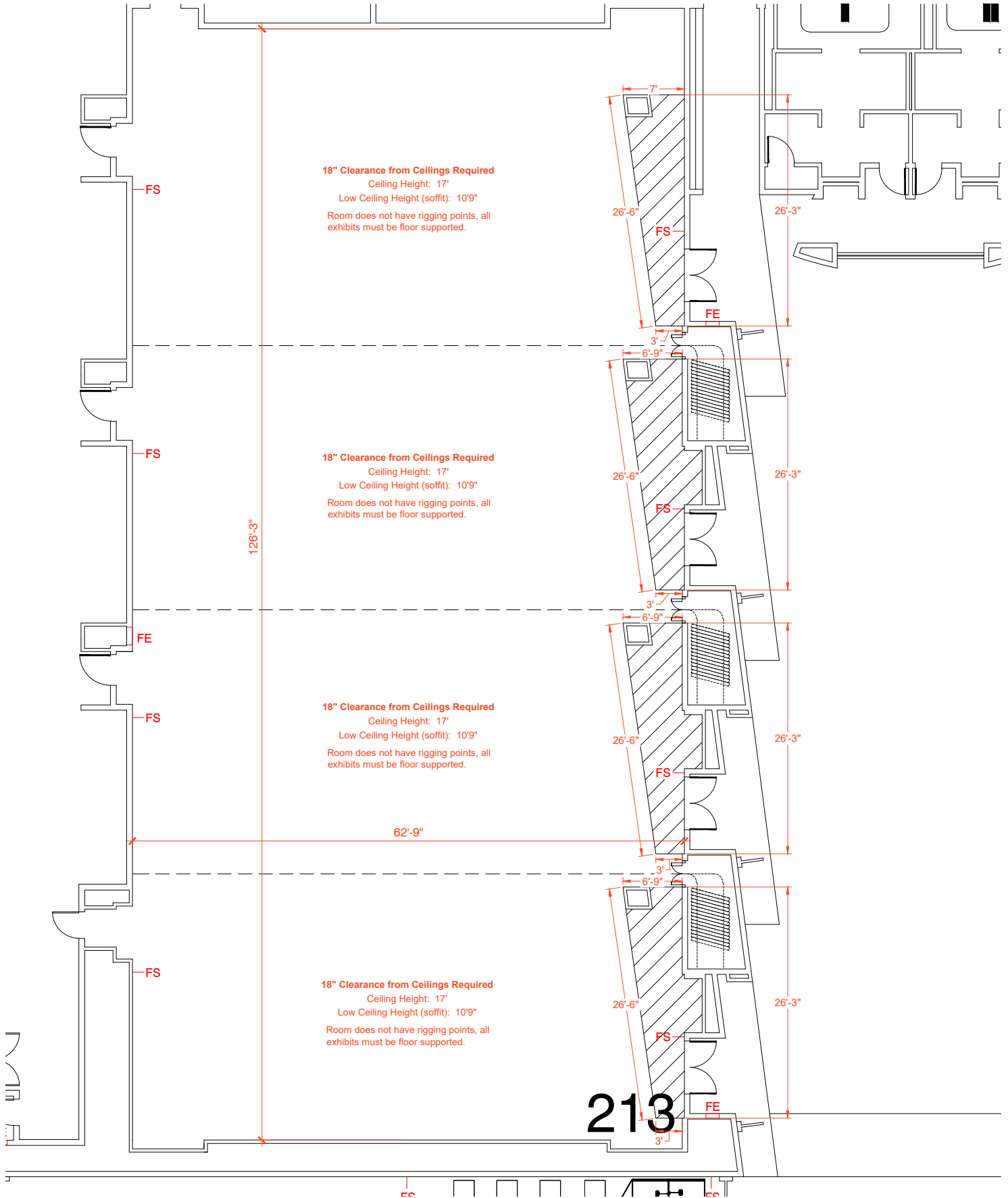
# MEETING ROOM 212



Disclaimer: Every effort has been made to ensure the accuracy of all information contained on this floor plan. However, no warranties, either expressed or implied, are made with respect to this floor plan. If the location of building columns, utilities or architectural components of the facility is a consideration in the construction or usage of an exhibit, it is the sole responsibility of the exhibitor to physically inspect the facility to verify all dimensions and locations.

FS = Fire Strobes are located at 66" from the floor unless noted otherwise (4'x8") - DO NOT BLOCK  
 ES = Exit Signs are located at 97" from the floor unless noted otherwise - DO NOT BLOCK  
 FE = Fire Extinguisher Cabinet - DO NOT BLOCK  
 FH = Fire Hose Cabinet - DO NOT BLOCK

# MEETING ROOM 213

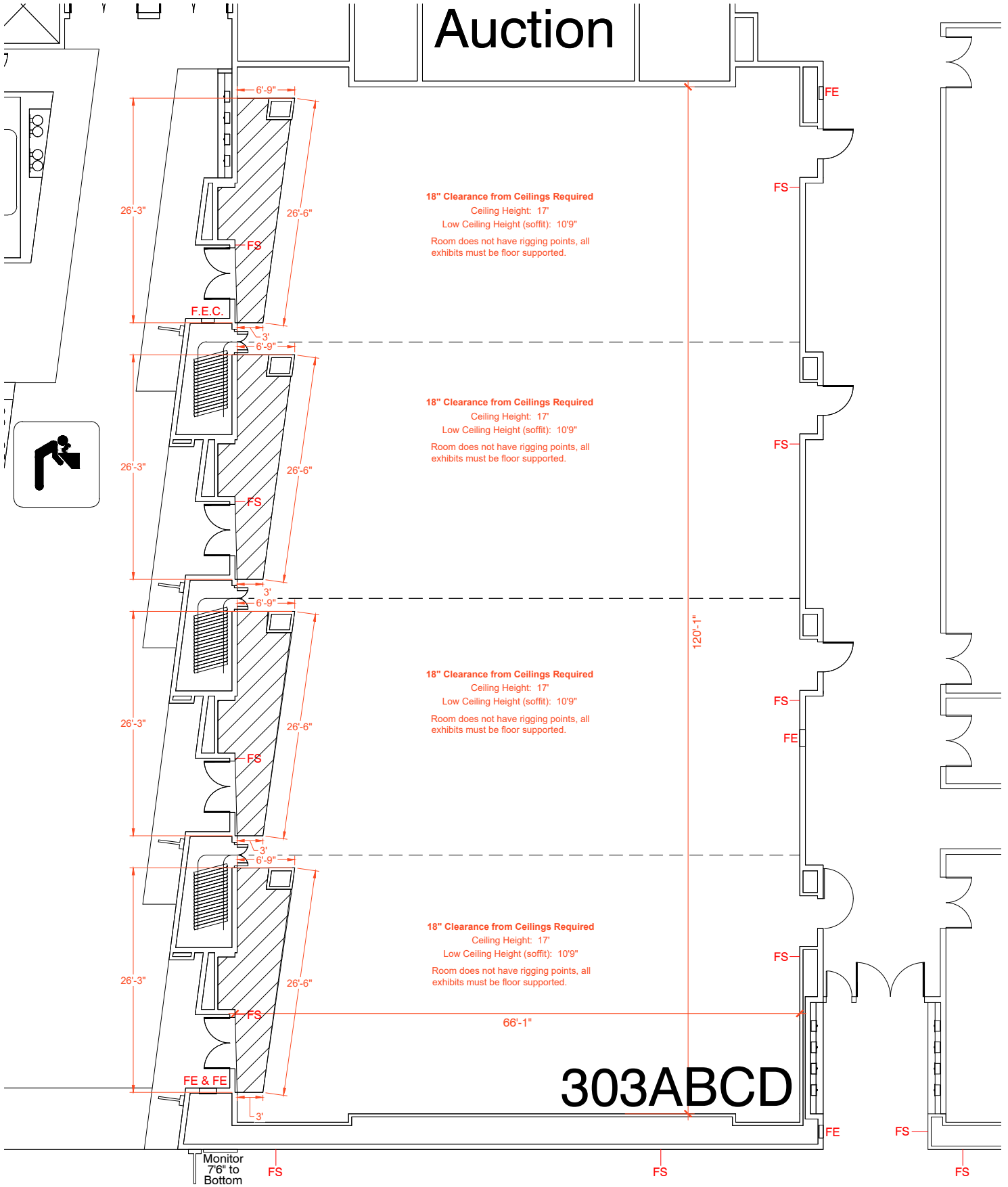


Disclaimer: Every effort has been made to ensure the accuracy of all information contained on this floor plan. However, no warranties, either expressed or implied, are made with respect to this floor plan. If the location of building columns, utilities or architectural components of the facility is a consideration in the construction or usage of an exhibit, it is the sole responsibility of the exhibitor to physically inspect the facility to verify all dimensions and locations.

FS = Fire Strobes are located at 66" from the floor unless noted otherwise (4"x8") - DO NOT BLOCK  
 ES = Exit Signs are located at 97" from the floor unless noted otherwise - DO NOT BLOCK  
 FE = Fire Extinguisher Cabinet - DO NOT BLOCK  
 FH = Fire Hose Cabinet - DO NOT BLOCK

# MEETING ROOM 303

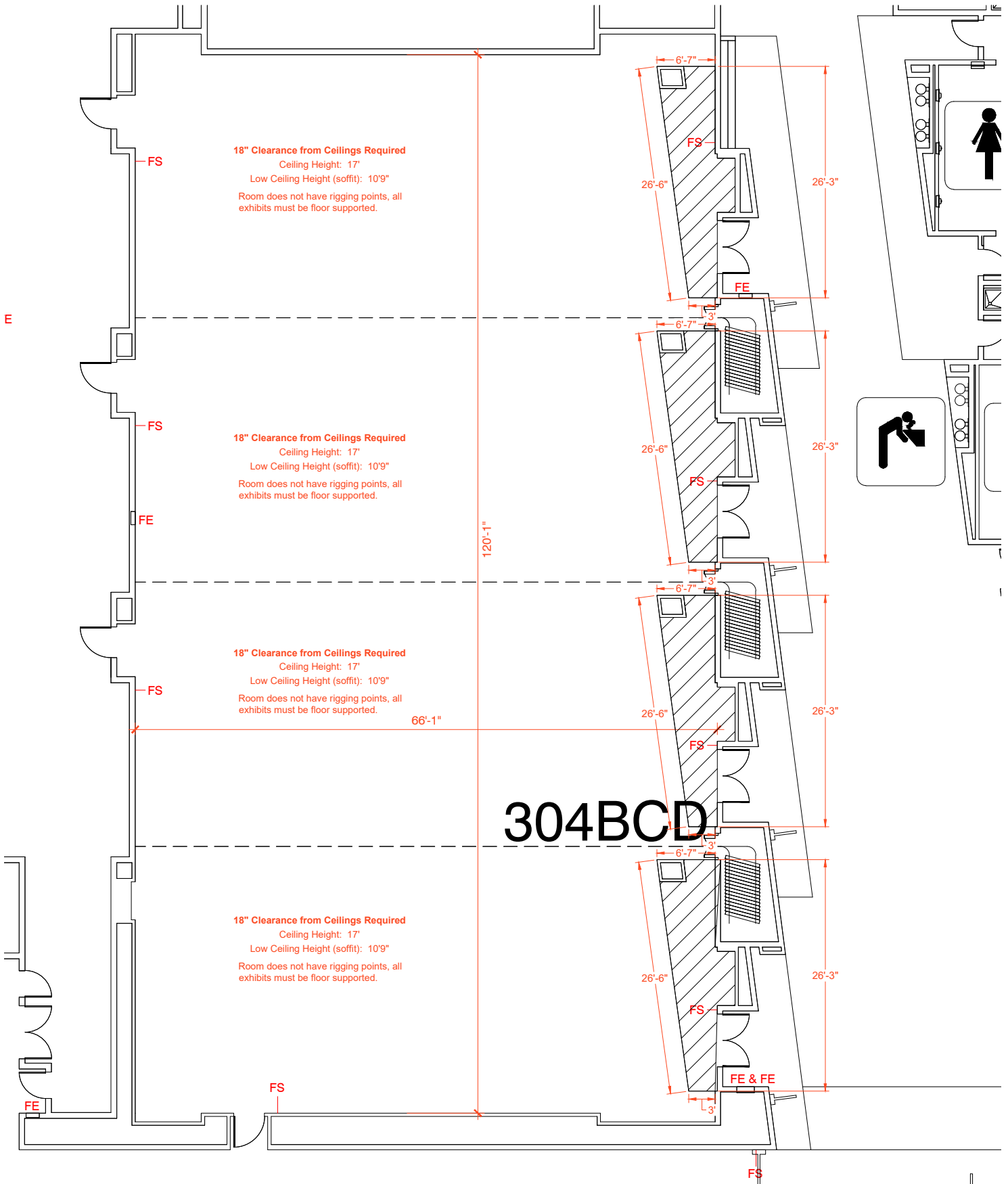
## Auction



Disclaimer: Every effort has been made to ensure the accuracy of all information contained on this floor plan. However, no warranties, either expressed or implied, are made with respect to this floor plan. If the location of building columns, utilities or architectural components of the facility is a consideration in the construction or usage of an exhibit, it is the sole responsibility of the exhibitor to physically inspect the facility to verify all dimensions and locations.

FS = Fire Strobes are located at 66" from the floor unless noted otherwise (4"x8") - DO NOT BLOCK  
 ES = Exit Signs are located at 97" from the floor unless noted otherwise - DO NOT BLOCK  
 FE = Fire Extinguisher Cabinet - DO NOT BLOCK  
 FH = Fire Hose Cabinet - DO NOT BLOCK

# MEETING ROOM 304



Disclaimer: Every effort has been made to ensure the accuracy of all information contained on this floor plan. However, no warranties, either expressed or implied, are made with respect to this floor plan. If the location of building columns, utilities or architectural components of the facility is a consideration in the construction or usage of an exhibit, it is the sole responsibility of the exhibitor to physically inspect the facility to verify all dimensions and locations.

FS = Fire Strobes are located at 66" from the floor unless noted otherwise (4"x8") - DO NOT BLOCK  
 ES = Exit Signs are located at 97" from the floor unless noted otherwise - DO NOT BLOCK  
 FE = Fire Extinguisher Cabinet - DO NOT BLOCK  
 FH = Fire Hose Cabinet - DO NOT BLOCK